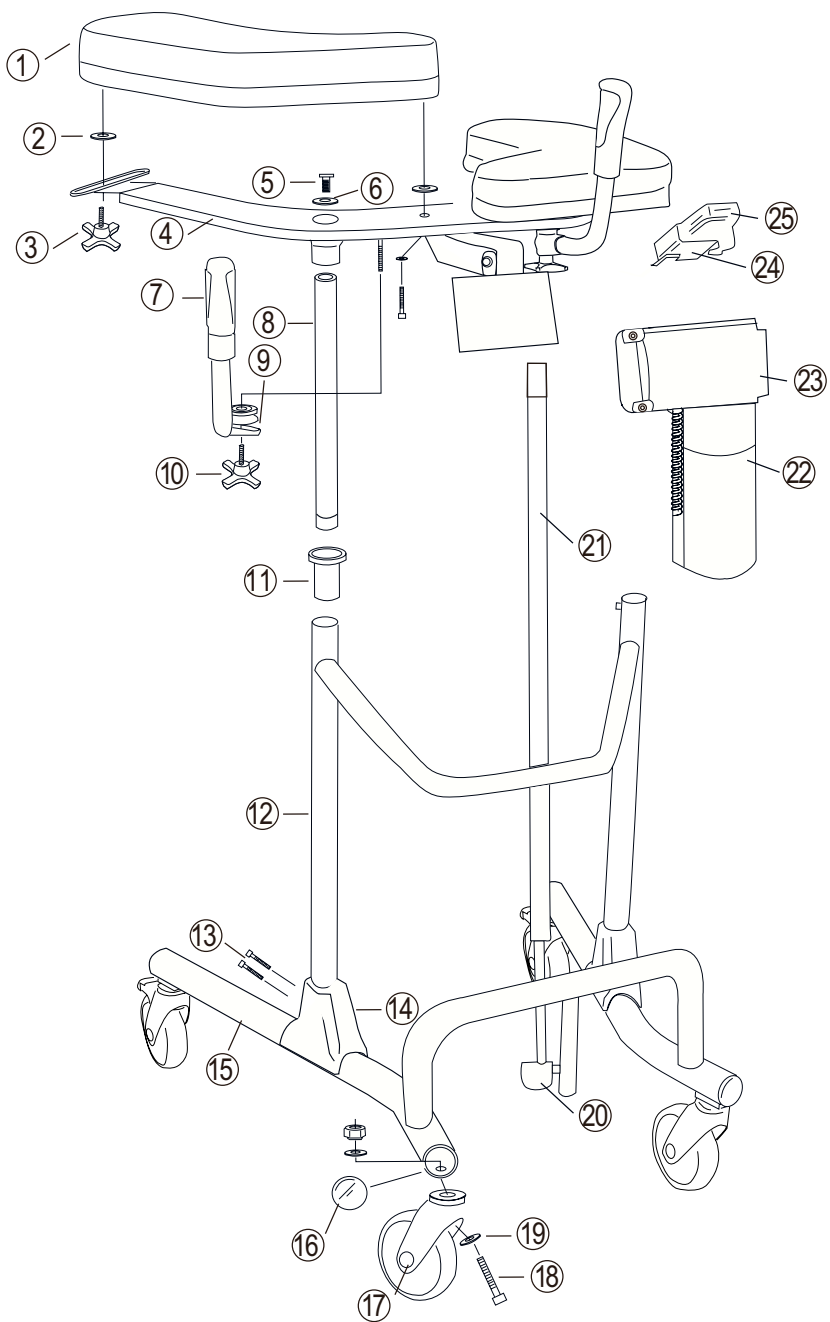




# Bure<sup>TM</sup>

## Walker

Bure Ortho (S) 56-317(T)-(S)



## Parts list

<b>1</b> Arm rest plate	<b>11</b> Guide sleeve	<b>20</b> Cover/green
<b>2</b> Plastic washer	<b>12</b> Intermediate frame, Ortho	<b>21</b> Actuator (Linak/T-Motion)
<b>3</b> Knob	<b>13</b> Bolts	<b>22</b> Control box (Linak/T-Motion)
<b>4</b> Upper frame	<b>14</b> Protective cover	<b>23</b> Battery
<b>5</b> Attachment bolt (2 pcs)	<b>15</b> Base frame, Ortho	<b>24</b> Holder/ remote control
<b>6</b> Serrated washer	<b>16</b> End bushing	<b>25</b> Remote control (Linak/T-Motion)
<b>7</b> Handle and grip	<b>17</b> Castor	
<b>8</b> Chromium-plated tube	<b>18</b> Bolt	
<b>9</b> Clamp	<b>19</b> Washer	
<b>10</b> Knob		

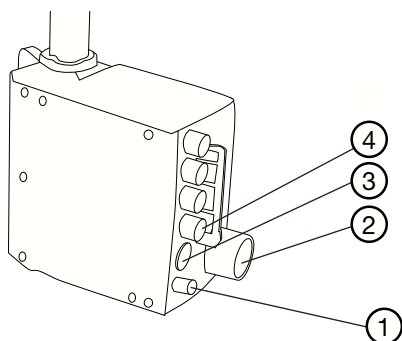
# Spare parts

No.	Part No.	Description
1	57-357-R	Arm rest plate, right Bure Ortho/S
1	56-357-L	Arm rest plate, left Bure Ortho/S
2	57-904	Plastic washer/Arm support widening
3	56-364	Knob for adj. width of arm rest plates
4	57-356	Upper frame, Bure Ortho/S
5	57-816	Attachment bolt, M10x40
6	57-803	Serrated washer
7, 9,10	56-353	Bure Std Handle kit (2 pairs incl. attachment knob/clamps)
8	58-311	Guide tube with bronze bushings
10	56-363	Knob for adjusting handle
11	56-340	Guide sleeve
12	57-355	Intermediate frame, Bure Ortho/S
13	57-810	Bolt M8x45
14	56-375	Protective cover, plastic Bure Standard
15	57-354	Lower frame Bure Ortho
15	57-354-S	Lower frame Bure Ortho S
16	56-344	End piece, lower frame, Black/D45
17	56-361	Castor with brake 125mm
-	56-357	Castor without brake 100 mm
-	56-358	Castor with brake 100 mm
-	56-360	Castor without brake 125 mm
-	56-387	Castor with brake 75 mm
18	-	Bolt M10x50
19	57-848	Nordloc washer
20	58-331	Cover/green (T-motion)
20	58-332	Cover/green (Linak)
21	56-349-1	Linak – Actuator (Raise/Lowerk) (only EL, LA31)
21	58-315	T-Motion – Actuator (Raise/Lower)
22	56-345-1	Linak – Control box 220 V (only EL, LA31)
22	58-316	T-Motion – Control box 220 V
23	56-346-1	Linak – Battery (only EL, LA31)
23	58-317	T-Motion – Battery
24	57-041-1	Holder, hand controller
25	56-370-1	Linak – Hand control 2channel (Raise/Lower) (only EL, LA,31)
25	58-318	T-Motion – Hand control (Raise/Lower)
-	56-305	Touch-up paint, Bure Silver 8
-	57-009-1	Linak – Power cable, coiled
-	58-326	T-Motion – Power cable, coiled

# Accessories

Part No.	Description
56-326-0	Handbrake kit/2 handles
56-326-1	Handbrake kit/One-handed brake
56-327	Frame elevation kit, 70 mm
56-393	Footplate, short, Bure Ortho
56-383	Footplate, long, Bure Ortho
56-392	Drip holder
56-335	Attachment for drip holder
56-336	Oxygen holder
56-337	Side support, adjustable
56-338	Drip rod complete with attachment
56-389	Soft basket with attachment, Bure Standard/S

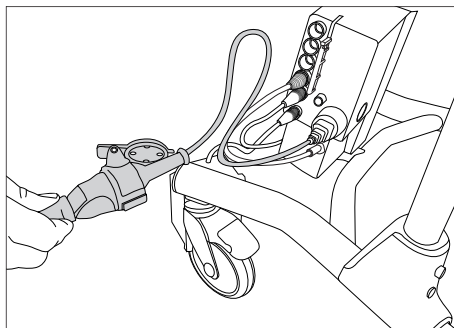
## Other instructions Linak



### Control box wiring

1. Battery terminal socket.
2. Plug socket.  
(NOTE! The plug must ALWAYS be connected to the control box for IP protection to be valid.)
3. Remote control socket.
4. Socket for the raise/lower actuator.

NOTE! Make sure that plugs are connected to the correct sockets otherwise the actuators can be damaged.



### Battery charging

Battery charging must take place when the walker is not in use. (The battery can never be overcharged.) Charging is carried out by inserting the plug in a wall socket.



The battery should be charged at least 24 hours before 1st use.

# Other instructions T-Motion



## Control box wiring

Remove the control box cover to make the connections as described below. Use a screwdriver or similar; refer to the special labels on the control box.

1. Socket for the raise/lower actuator.  
NOTE! Make sure that plugs are connected to the correct sockets otherwise the actuators can be damaged.
2. Remote control socket.
3. Battery terminal socket.
4. Plug socket. NOTE! The plug must ALWAYS be connected to the control box for IP protection to be valid.

## Battery charging

- Connect plug to 230V wall socket. Charging begins automatically and the battery LED flashes green.
- Make sure the battery is fully charged before using for the first time. It takes around 24 h to fully charge the battery.
- We recommend that the battery plug be removed from the control box if the product will be out of use for an extended period (more than three weeks). This eliminates the risk of ruining the battery as the control box always uses a small quantity of electricity even when the walker is not in use.

## LEDs on control box and battery

- Control box – green light when power is available from battery/mains socket.
- Battery:
  - The LED flashes green during charging.
  - The LED shows a constant green light when the battery is fully charged.
  - When the battery is in normal state/in operation, the LED flashes green at REGULAR intervals of 0.5 s ON, 4 s OFF.
  - When the battery requires charging (remaining charge <25%) the LED flashes orange/red at REGULAR intervals of – 0.5 s ON, 4 s OFF.

**NOTE!** The battery has an in-built function that automatically switches it off when remaining charge is <20%. The LED is then extinguished. The battery must now be fully charged before the electronics can be used again.

## General maintenance advice



- Wipe the walker and its armrests clean as necessary; use soap solution or alcohol-based surface disinfectant.
- The product may be cleaned in a tunnel washer or similar as electrical systems have IP65 protection. However, the product is not corrosion proof which means washing by machine may reduce its service life.
- Replace damaged parts immediately; must be done by experienced personnel.
- The product is only intended for indoor use.

## Safety instructions

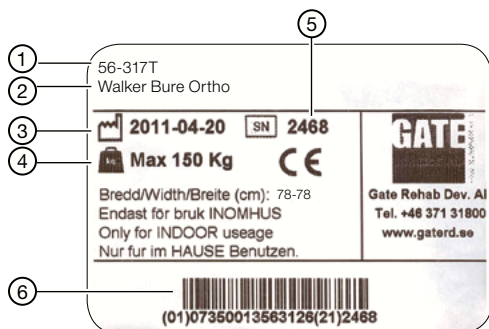


Bure Walker may only be used;

- as a WALKING AID indoors
- on HARD, LEVEL surfaces.

**MAX USER WEIGHT: 150 KG**

## ID label



1. Part number
2. Product name
3. Date of manufacture
4. Max user weight
5. Serial number
6. EAN code

## Warranty

We provide two years' warranty for manufacturing faults (does not apply to wear parts).  
For further information or enquiries please contact:

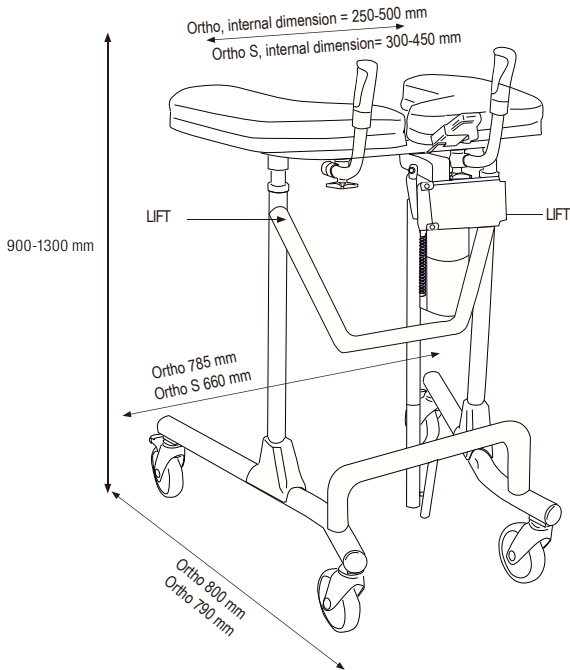


Gate Rehab Development AB  
Industrigatan 2, SE-330 21 Reftele  
Tel: +46 371 31800  
info@gaterd.se

# Dimensions

	Ortho, S
Product weight	20 kg
Product height	900-1300 mm

"LIFT" denotes suitable handhold for lifting the walker.  
 NOTE! At least two people are required for lifting.



**CE** CE marked according to MDD 93/42/EEC



YOUR HEALTHCARE PARTNER

Would you like to know more?

Contact us at: Tel: +46 371 31800  
 Gate Rehab Development AB  
 Industrigatan 2 | SE-330 21 Reftele  
 info@gaterd.se | www.gaterd.se



GATE COLLECTION